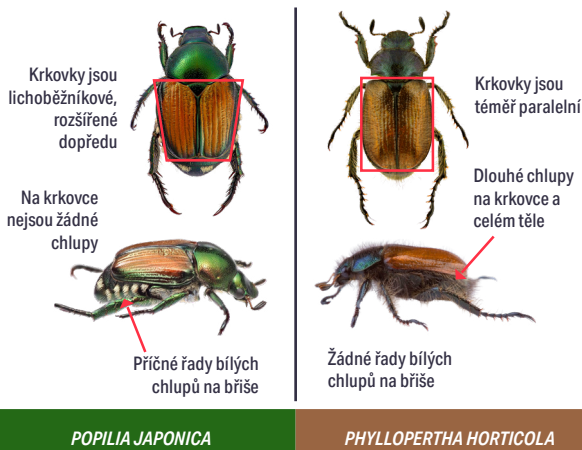


# CO JE JAPONSKÝ BROUK A PROČ JE HROZBOU?

## DOSPĚLÝ

Dospělci *Popilia japonica* (8-11 mm) jsou podobní *Phyllopertha horticola*, i když je lze odlišit podle pozdějšího:



## PŘÍZNAKY POŠKOZENÍ

Adult beetles feed on most green leaves, but they also feed on the needles of conifers. Beetles can damage and in large numbers feed on the fruit of various fruit species. As a result of this damage, the fruit is inedible, unless protected by pesticides.

Adult beetles can also feed on and damage underground stems of various green plants and garden plants, ornamental plants and lawns. They feed on the roots of raspberries, strawberries, seedlings in nurseries and other plants, reducing their vitality and yield, and sometimes killing them.



## ŽIVOTNÍ CYKLUS

Usually one generation occurs per year. Larvae overwinter in the soil. When the temperature in the soil rises in the spring, they move towards the surface and start feeding on roots. After a few weeks, they pupate. Adult beetles appear from the middle of May to the middle of July, depending on the location. Females lay 30-45 eggs in this period, which can reach up to 60 eggs. They prefer moist, loamy soil covered with grass. After hatching, the young larvae feed on roots and organic matter and develop through the three larval stages. In the warmest soils in late autumn, the larvae move deeper into the soil, where they overwinter.

1 Japanese beetle (*Popilia japonica*) is a species of scarab beetle originating from Japan, which is invasive in Northern America and Europe. In Europe (quarantine pest A2) it was first found in 2014 in Italy. It is highly polyphagous, attacking more than 300 different types of plants.

## VEJCE

2 Eggs are spherical, ellipsoidal or slightly cylindrical, usually have a diameter of about 1.5 mm, translucent to cream-colored.



## LARVA

3 Larvae are translucent and cream-colored, covered with scattered long, thin, brownish hairs. The head and 3 pairs of legs are yellowish-brown. Like for most scarab larvae, the larva has a C-shaped resting posture.



## KUKLA

4 About 14 mm long, light cream-colored to yellowish-green, depending on the age.



## KONTROLA

In case of discovery in a new area, report to national organizations for plant protection.

After official confirmation of the presence of *Popilia japonica* in an area, it should be possible to combine control measures to reduce the population with the aim of eradication, if possible, and to prevent its spread.

JARO

LÉTO

PODZIM